

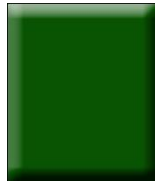


East of England Ambulance Service  
NHS Trust



# NHS Foundation Trust

## Becoming A Governor





## The Trust's vision and objectives

### Vision

Our aim is to be the recognised leader in emergency, urgent and out of hospital care in the East of England.

### Objectives

- To be the market leader in providing patients with the gateway to urgent and emergency health care services.
- To have a workforce that has the skills to lead and deliver change, create flexibility and create a learning environment.
- To become the best provider of unplanned healthcare needs in the country.
- To have best in class business intelligence tools to be the most responsive and innovative provider of unplanned healthcare.



## Our Foundation Trust timetable

- Referral of application to Secretary of State: October 2011
- Secretary of State decision: December 2011
- Monitor assessment phase: TBA  
(Anticipated Jan-Jun 2012)
- Authorisation as a NHS Foundation Trust: 2012



# Becoming A Governor

## Interested in being a Governor?

Today's workshop is to give you information on:

What?

How?

Who?

When?

Please ask questions.



## What is a Foundation Trust?

A Foundation Trust is still part of the NHS, but:

- is locally run by local people.
- has new financial powers.
- has new governance rules.
- with an independent regulator – Monitor.



## The Trust membership

The Trust membership:

- numbers more than 6,000 (excluding staff).
- is demographically representative of the Trust's region (age, gender, ethnicity, geographic location, socio-economic background).
- benefits from a dedicated involvement team to engage with members.



## Who are the members of the Trust?

- Members of the public, including service users and carers.
- Staff and volunteers.
- Stakeholder representatives.



## Who can be a Governor?

- Any member of the Trust can be a Governor for the Constituency or Class to which they belong.
- However, there are some exclusions, as listed on the hand-out.
- If you are unsure whether these apply to you, please ask (this can be done confidentially at the end of today's session).



## Payments and expenses

- The role of Governor is a voluntary position.
- It is illegal to pay or otherwise remunerate Governors.
- However, the Trust is responsible for all reasonable expenses incurred by the Governors in the performance of their agreed duties.



# Becoming A Governor

## The Role of Governors



## What do Governors do?

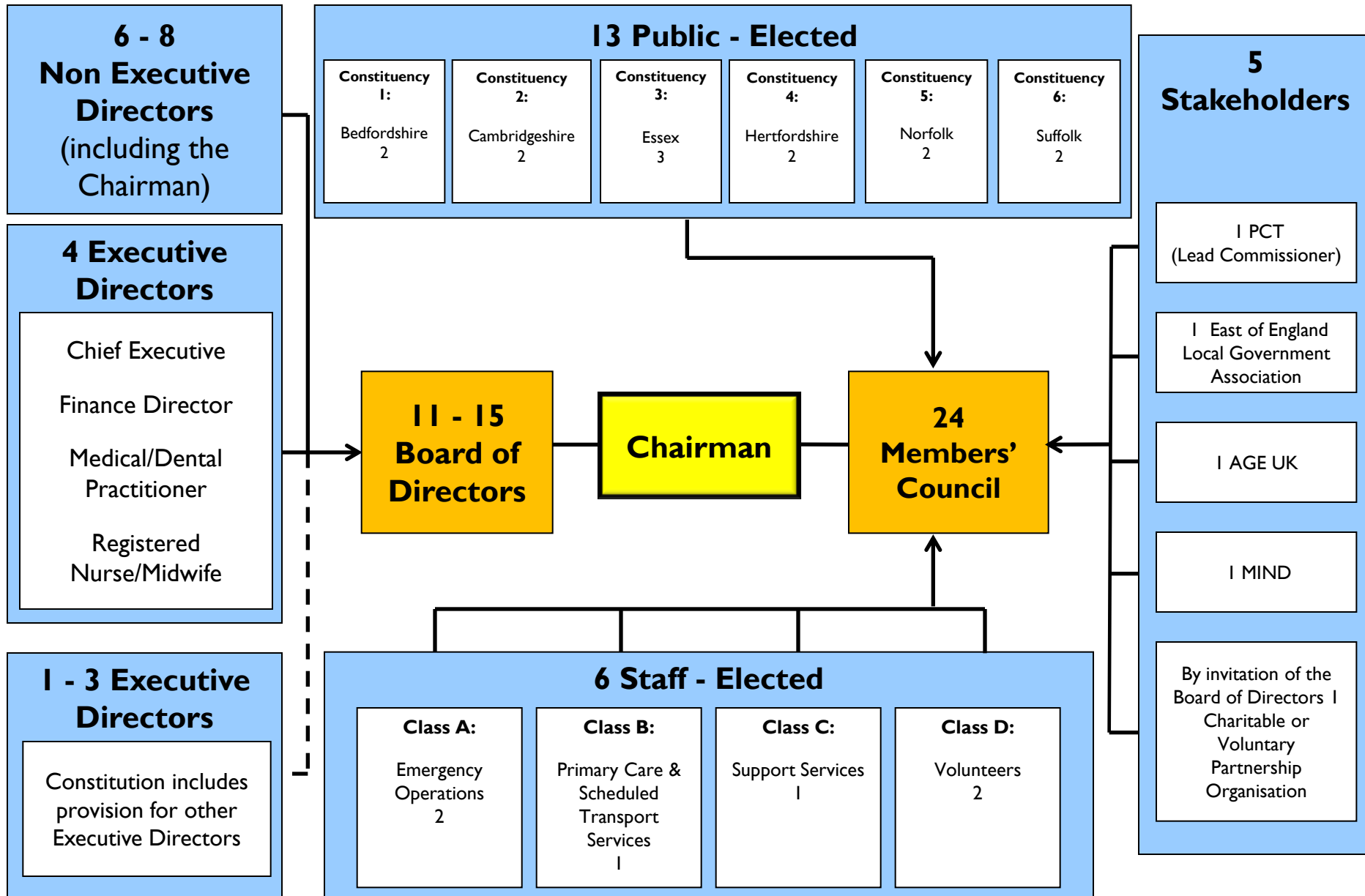
- Represent the members in their constituency.
- Meet at least three times a year as a Members' Council.
- Oversee the plans, aspirations and performance of the Trust.
- Contribute to the Trust's planning process.



## What does the Members' Council do?

- Appoints the Trust Chairman and Non-Executive Directors.
- Approves the appointment of the Chief Executive.
- Appoints the auditors.
- Approves the annual accounts.

# GOVERNANCE STRUCTURE: EAST OF ENGLAND AMBULANCE SERVICE NHS FOUNDATION TRUST





## Where do I find out about all the rules and requirements?

In the Constitution for the East of England Ambulance NHS Foundation Trust (once authorised).

## How long would I be a Governor?

Governors will be elected for terms of 2 or 3 years, up to a maximum of 6 years.



## Will the *Members' Council* really be able to change things?

Yes. The Members' Council will be able to:

- influence the design of local service provision.
- choose who to appoint to lead the Trust.
- provide direct feedback from members to the Board of Directors following workshop events.
- assist the Trust in public involvement and engagement.



# Becoming A Governor

## The Election Process



## Election timetable

We are proposing to hold elections between January 2012 and April 2012.

However, this will be dependent upon the Secretary of State's approval in December 2011.



## Post election – successful candidates

- Register of Interests to be completed immediately (Political and Financial).
- Monitor to be notified of outcome of elections.
- Criminal Records Bureau checks to be made.
- Governors attend Welcome and Induction Meeting.



## Post election – unsuccessful candidates

- Thank you – we still value your commitment.
- Continued membership involvement in events/focus groups.
- Participation in recruitment activities.
- Involvement in local forums.

... and much more.



# Becoming A Governor

## What support will I receive as a Governor?

- Governors and Membership Office.
- In-house induction programme.
- Membership of external associations.
- Foundation Trust Network.
- Foundation Trust Governors' Association.
- Monitor consultation programmes.
- Governors' Handbook.
- Training in the role and its responsibilities.
- Leadership skills.
- The world of the NHS, e.g. NHS finances.



# Becoming A Governor

## Questions